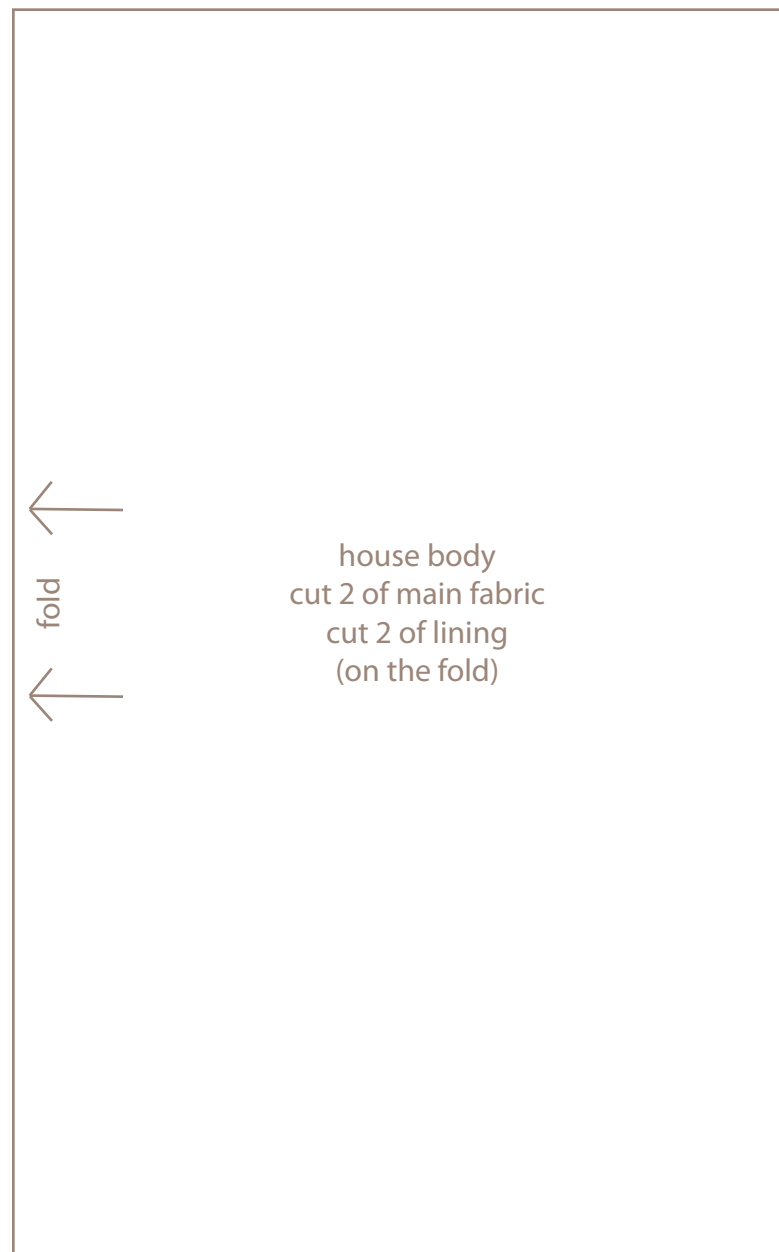
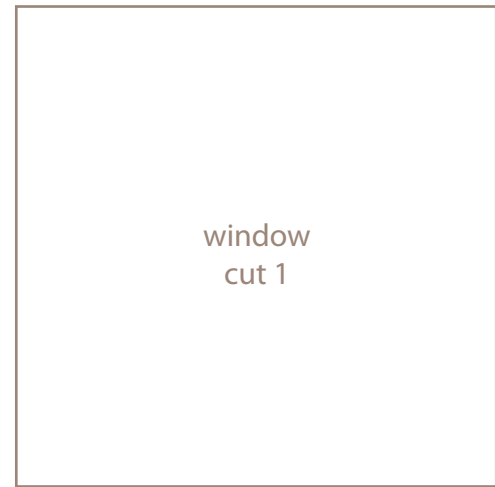
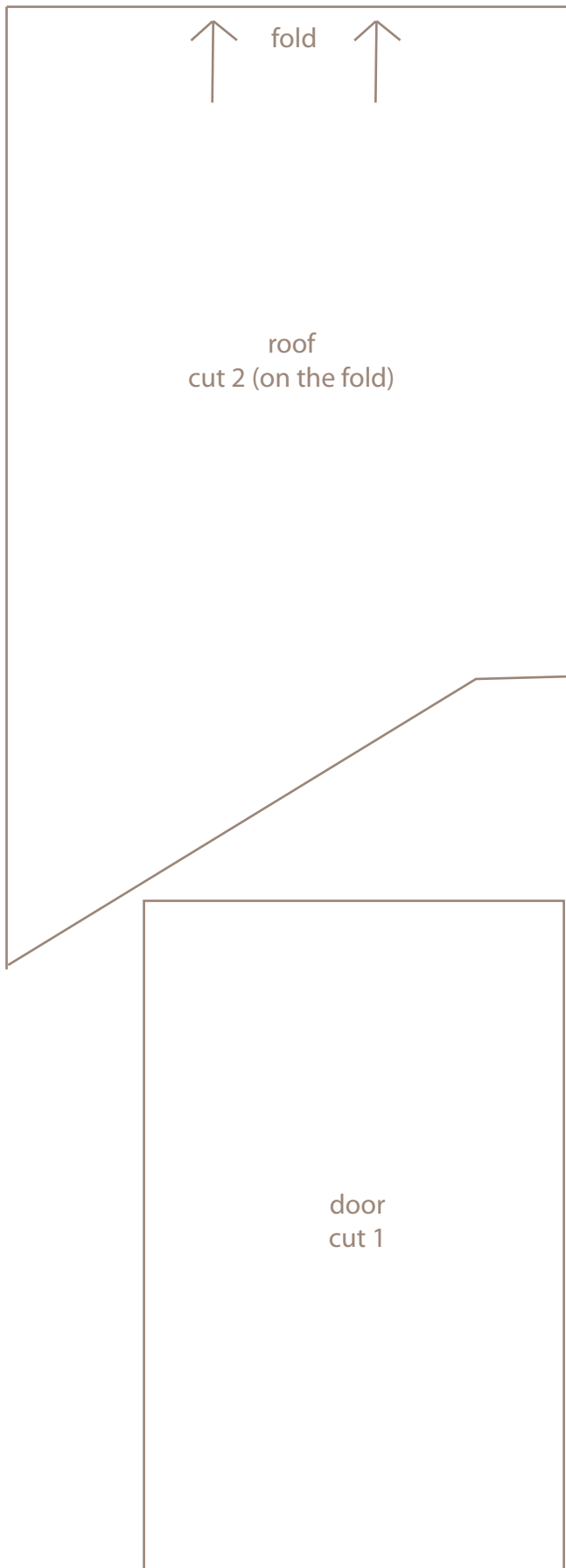




# Little House Pouch





# Little House Pouch

## Supplies

- fabric for main bag (body 16"x13". lining 16"x13")
- fabric scraps for roof, door, window and flowers
- 3 buttons
- contrasting thread
- velcro fastener (optional)
- fabric marker or tailor's chalk
- double-sided fusible interfacing (optional)

Seam allowance: 3/8"

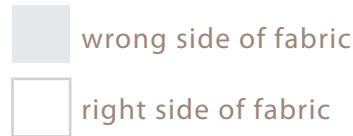
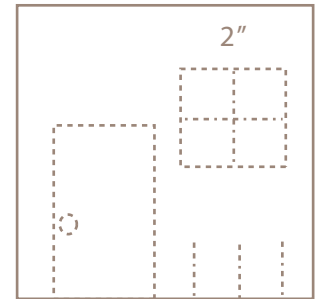


fig. A

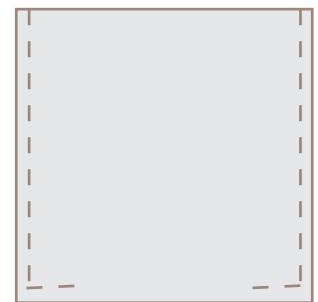


Step 1: Cut out your fabric according to the template.

Step 2: Arrange window, door, and flowers on front piece of pouch to get a sense of the layout. Make sure that the window will be at least 2" from top edge of fabric and everything is well outside the seam allowance. Remove from fabric.

Step 3 [fig. A]: *If you want to use double-sided fusible interfacing, do so now.* Otherwise, just pin the door in place and sew around 3 sides, 1/4" from edge of fabric. For a handmade look, sew 4-5 times. Sew some stitches for a doorknob. Repeat with the window, adding stitched lines for the window panes. With a fabric marker or tailor's chalk, draw lines where you want your flower stems to go and stitch the lines. Sew buttons and flowers in place.

fig. B



Step 4 [fig. B]: Pin and sew lining, right sides together, leaving an opening at the bottom (in order to turn the pouch right side out at the end). Finish with an overcasting stitch.

fig. C



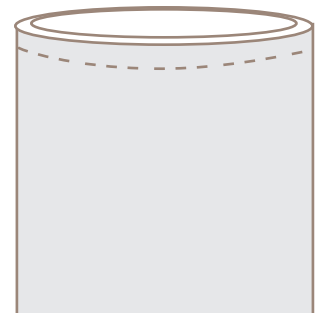
Step 5: *If you plan to use a velcro fastener, sew it to the top of the house front piece, centered, and about 1" down from the top edge.* Pin and sew the body of the bag, right sides together, sewing all around three sides. It's helpful to put your pins on the side with your appliqué design so you can make sure that your seams line up with your door and window. Finish with an overcasting stitch.

fig. D



Step 6: *If you are using velcro, sew it to the bottom roof piece now, about 1" from what will be the bottom edge of the inside piece* [fig. C]. Pin and sew the two roof pieces right sides together, leaving an opening at the top [fig. D]. If you want to sew a decorative stitch on the roof, do so now.

Step 7: With body of bag wrong sides out and lining of bag right sides out, fit lining into bag (so that right sides will be facing one another), matching seams on either end. Place the roof flap into the pouch on the back side, between the lining and the body of the pouch. The right side of the front of the flap should be facing towards the right side of the back of the bag. Stitch along the edge. Pull bag through the opening, push corners out and sew opening in the lining closed.



Step 8: Topstitch around the top, 1/4" from the edge.